



📍 71 Lypiatt Road, Corsham, SN13 9JE

🏠 Guide Price £400,000

Rarely does a property come to the market where such attention to detail is shown, along with this level of quality as this STUNNING 3-BEDROOM END TERRACE PROPERTY IN CORSHAM

- Stunning 3 Bedroom Contemporary Home
- Having Undergone Full Makeover
- Beautiful Fully Fitted Kitchen Breakfast Room
- Living Room With Wood Burning Stove & Bi Folding Doors
- Fully Landscaped Rear Garden With Office/Workshop
- Updated Gas C/H & Replacement Double Glazing
- Outdoor Office/Workshop
- Viewing Strongly Advised

🏠 Freehold

🏠 EPC Rating C



Rarely does a property come to the market where such attention to detail is shown, along with this level of quality as this Stunning 3-Bedroom End Terrace Property in Corsham. The property has undergone extensive remodeling and design by the existing owner to create a spacious, light, and modern contemporary feel throughout that is a real credit to the owner. The living accommodation comprises an entrance porch with a built-in storage cupboard that leads into this stunning newly installed kitchen breakfast room with fantastic attention to detail from the lighting to the storage giving a wonderful space for entertaining and making use of all it has to offer. An additional benefit is a very useful contemporary downstairs cloakroom has been installed. Moving into the living room the focal point is the newly installed contemporary wood-burning stove along with bi-folding doors that lead out onto the rear landscaped garden. Moving upstairs the first floor has two double and one single bedrooms along with a family bathroom and a separate further cloakroom. As you move outside into the rear garden, once again you can see just how much work and effort has gone into making a wonderful outdoor haven for those who enjoy both outdoor dining and entertaining. The gardens are south facing with a covered barbeque area having been tastefully designed and built, with the rest of the garden laid mainly to lawn having well stocked mature borders along with two decked patio areas both leading from the bi-folding doors along with a further patio on the outside of the home office/workshop at the bottom of the garden which has both power and lighting. In short, we would strongly advise an internal viewing if this home is to be fully appreciated.

Situation

Every facility in Corsham is within a ten to fifteen minute walk including the primary school, secondary school, sports centre, library, the arts centre and cricket club (each of which have children's activities), the picturesque high street with its variety of interesting shops, cafes, public houses and Corsham Court with its lovely grounds. More comprehensive shopping and leisure facilities are available in The World Heritage City of Bath within about nine miles which has a mainline railway station with fast access to London (Paddington) as does nearby Chippenham which is within about 4 miles. Junctions 16 and 17 of the M4 motorway are within easy reach and commuting distance of Bristol, Swindon and London. Rudloe itself is a friendly community located 2 miles from Corsham in between Bath and Chippenham. There are good bus links and wonderful walks in the glorious countryside all around.

Property Information

Council Tax Band: B

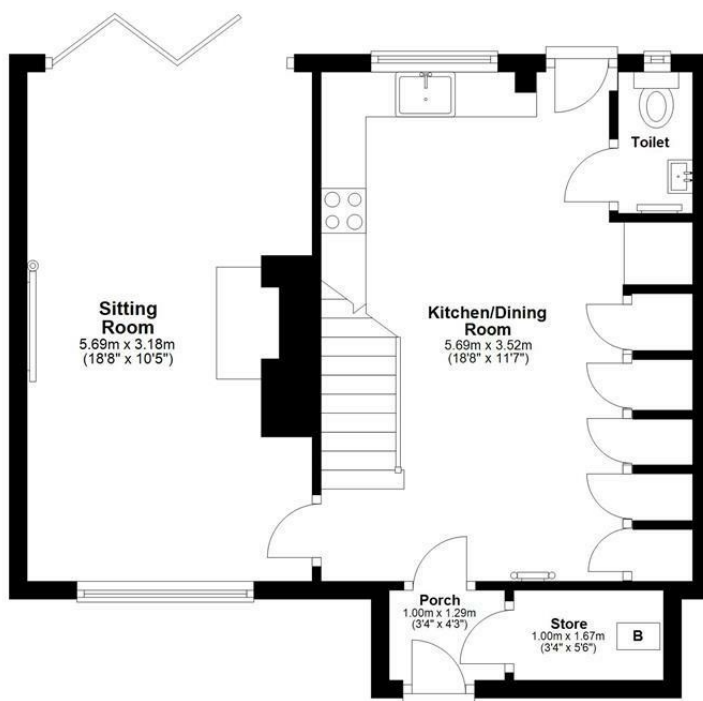
E.P. C Rating: C

Freehold



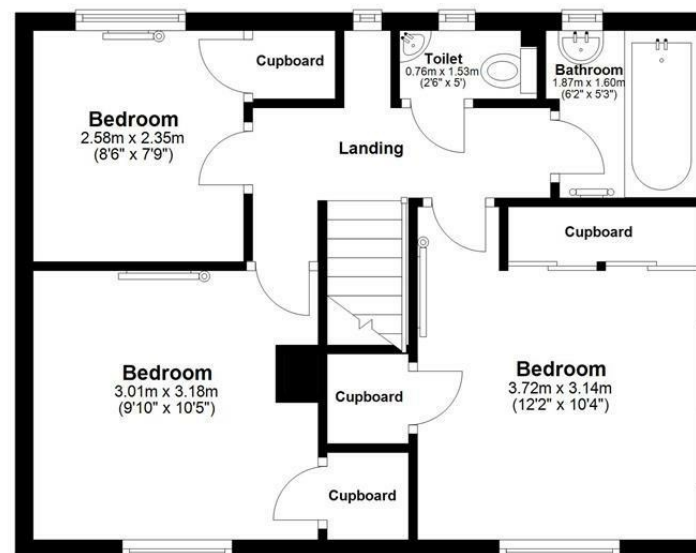
Ground Floor

Approx. 46.5 sq. metres (500.5 sq. feet)



First Floor

Approx. 42.2 sq. metres (454.7 sq. feet)



Total area: approx. 88.7 sq. metres (955.2 sq. feet)

Disclaimer: These particulars, whilst believed to be accurate are set out as a general outline only for guidance and do not constitute any part of an offer or contract. Intending purchasers should not rely on them as statements of representation of fact, but must satisfy themselves by inspection or otherwise as to their accuracy. No person in this firm's employment has the authority to make or give any representation or warranty in respect of the property. All measurements and distances are approximate only. Your home is at risk if you do not keep up repayments on a mortgage or other loan secured on it.